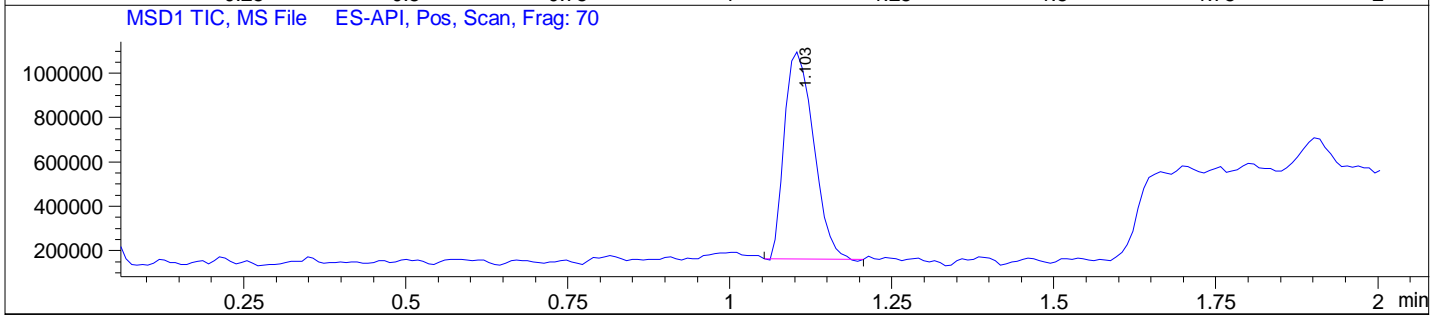
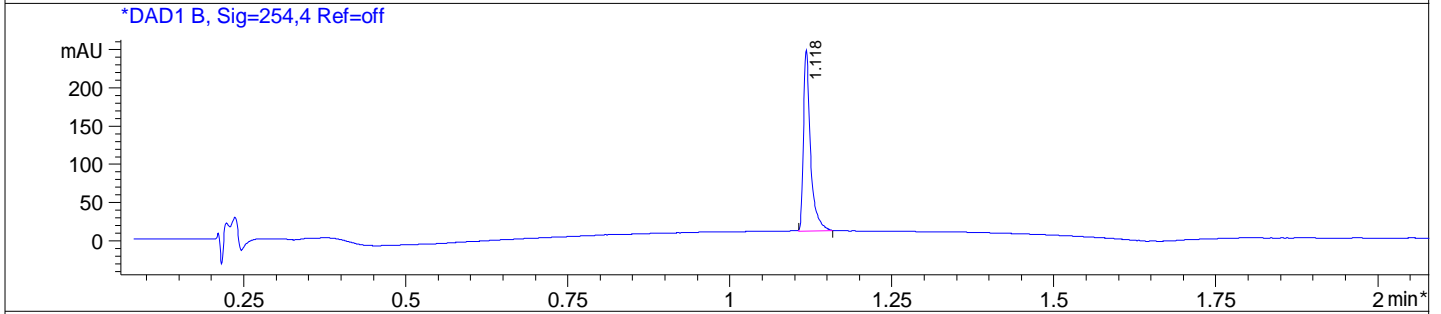
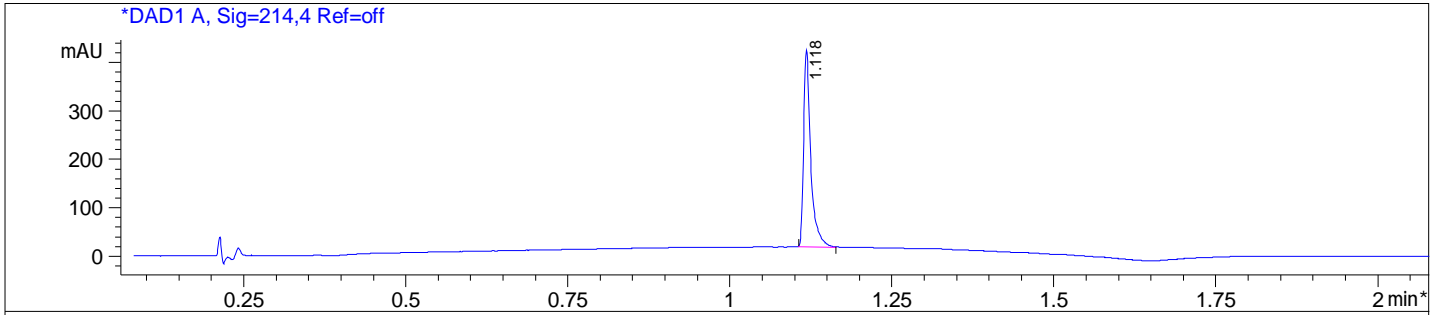


# LC/MS Report



**Analysis Method :** D:\METHODS\1-POS-3MIN.M  
**Sample Info :** Easy-Access Method: '1-POS-3MIN'  
**Method Info :** Mobile Phase : A:water(0.01%TFA) B:ACN(0.01%TFA)  
 Gradient:5%B increase to 95%B within 1.3min,95%B for 0.7min  
 Flow Rate :2.5ml/min  
 Column :Sunshell C18 30\*4.6mm,2.6um  
 Column Temperature:40C  
 Detection:UV(214nm,4nm) and MS(ESI,POS Mode,110-1300amu)



**Integration Results for DAD1 A, Sig=214,4 Ref=off**

RetTim	Width	Area	Height	Area%
1.12	0.01	311.22	406.13	100.00

**Integration Results for DAD1 B, Sig=254,4 Ref=off**

RetTim	Width	Area	Height	Area%
1.12	0.01	178.56	236.64	100.00

Ret. Time: 1.10

<<<< POSITIVE SPECTRA >>>>

